



ACUSTIMET

Areas of application

Industry

Workshop machines, fans, mills, printers, material handling machines, ovens, particle separators, power equipment, generators, engines, compressors, hydraulic equipment, food processing machines.

Transportation and vehicles

Engine compartment in boats and vehicles, scooters, off road vehicles, gardening tools, combustion mufflers.

Hospital and kitchen

Dish and washing machines, vacuum cleaners, ovens, airconditioners, mobile walls, hygienic acoustic ceilings.

Architecture

Elevators and engine rooms, ventilation installations, ceilings.

How to apply

Cut and form to desired shape. Mount at an appropriate distance from back wall. Seal all edges.

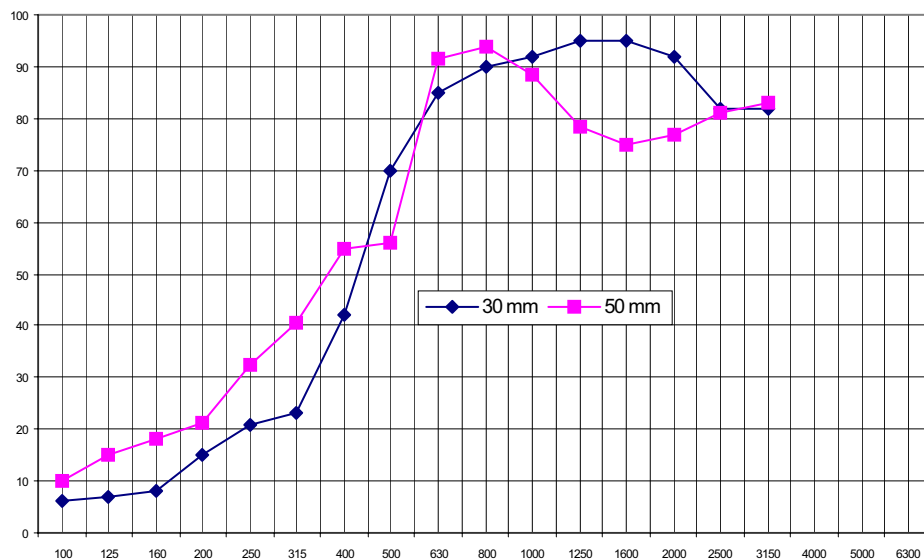
Product characteristics

Acustimet is an all-metal sound absorbing element without any fibers. Metal quality and thickness can be chosen according to requirements.

Advantages

- Non combustible
- Does not attract fluids or dirt
- Easily cleaned
- Withstand high temperatures
- Does not age
- Resistant to chemicals
- Fibre free
- Good sound absorption
- Mechanically rigid and tough
- Aesthetic appearance
- Resistant to wear
- No static electricity
- Easy to form

Absorption Coefficient % (ISO 10534)



Frequency, Hz, Third Octave Bands

Technical data

Sound absorption	See diagram
Temperature resistance	Depending on metal
Flammability	Non combustible
Metal	Aluminium, steel, stainless steel
Colour	On demand
Thickness	1,2,3 mm, Other on demand. Stainless 0,5 mm.
Weight	Depending on Metal
Formability	As metal sheet
Sheet size	600x1200 and 1000x2000 mm

Advice

Forming and location of the material has importance to achieve maximum damping results.

SONTECH has a long experience of many practical sound damping projects. This experience is a valuable addition to the laboratory data shown in this document.

SONTECH can help you with advice and sound measurements as well as manufacturing a complete material kit

Designation system

Acustimet	AM
Thickness mm	0,5 , 1
Metal	AL, Fe, SS
Example of ordering code.	AM1AL2

